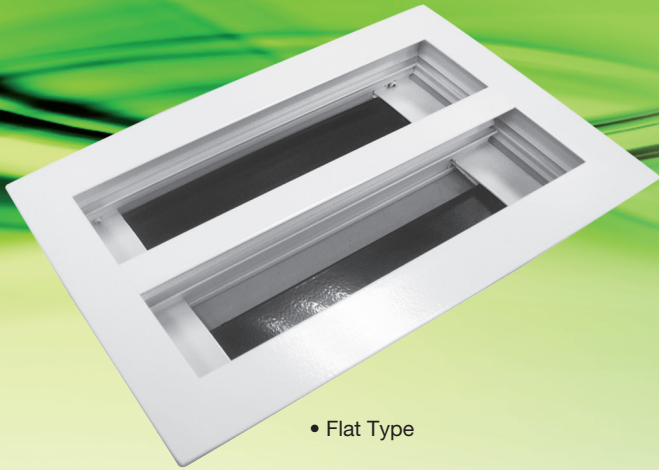


# SJS-A Jet Slot Ceiling Diffuser



• Flat Type

**ASLI SJS-A** is a type of diffuser that provide more air flow than conventional linear diffusers. It deliver high performance with minimal visibility air distribution design.

## Materials

Frame : Aluminium extrusion  
Blade : Aluminium extrusion

## Surface Finish

Baked white powder coated as standard.  
*Others available upon request.*

## Standard Size *Unit : mm*

600 (2') / 1200 (4')

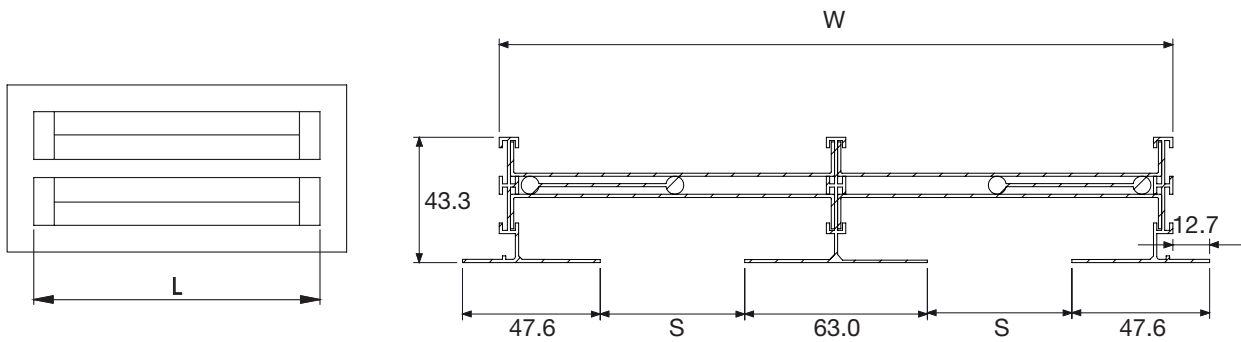
## Features

- Provide more airflow than conventional linear diffuser.
- Consist of pattern controller vane for adjustable flow pattern.
- Deliver high performance with minimal visibility air distribution design.

## Accessories

PB Plenum Box

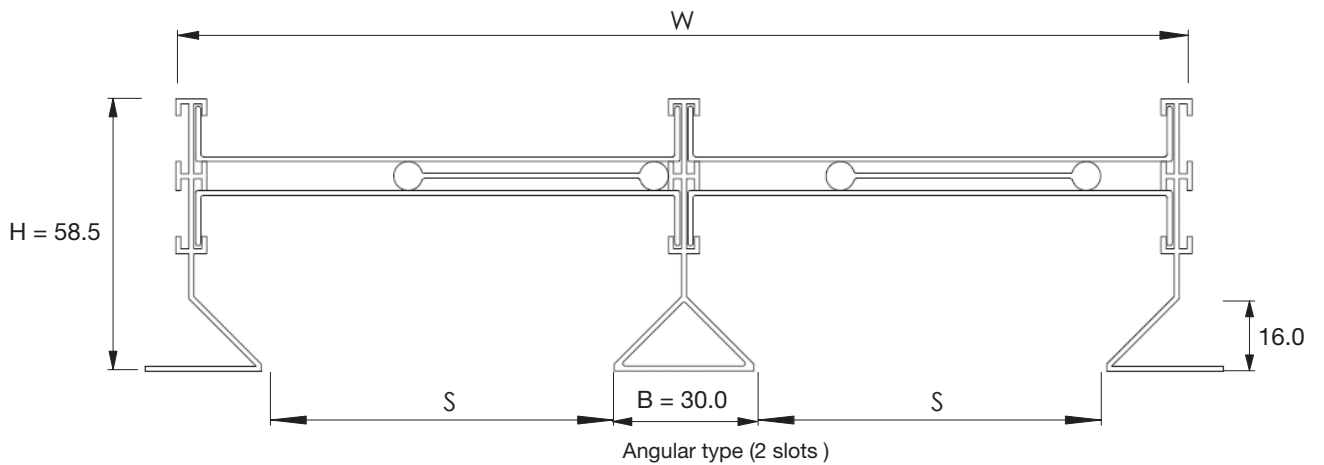
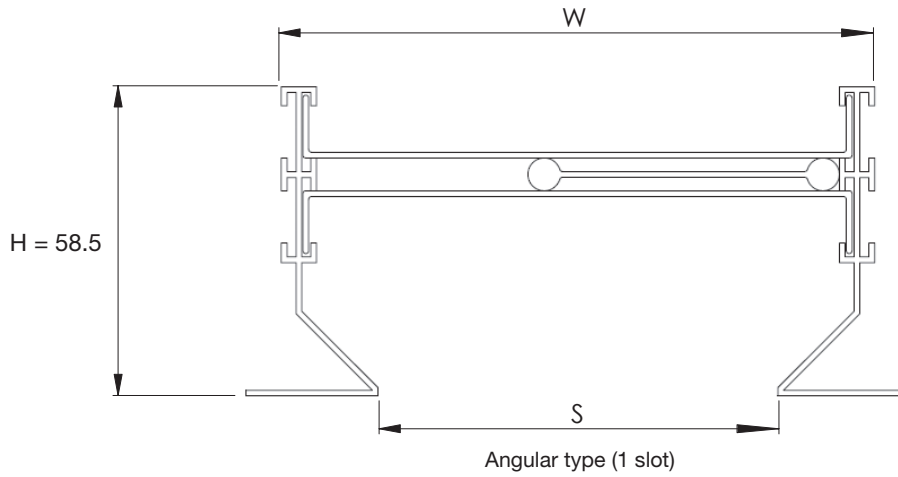
## SJS-A Flat Type Physical Dimension *Unit : mm*



Model	Slot width, S	Neck size, W	Duct Size, A	Ceiling Size, B	Face Size, D
1 slot	25	S + 70	L+80 W+10	L+85 W+15	L+95 W+25
	38				
	50				
	63				
	76				
2 slot	25	2S + 133	L+80 W+10	L+85 W+15	L+95 W+25
	38				
	50				
	63				
	76				

# SJS-A Jet Slot Ceiling Diffuser

## SJS-A Angular Type Construction Illustration *Unit : mm*



## SJS-A Angular Type Physical Dimension *Unit : mm*

Model	Slot width, S	Neck size, W	Duct Size, A	Ceiling Size, B	Face Size, D
1 slot	25	S + 37	L+47 W+10	L+52 W+15	W+37
	38				
	50				
	63				
	76				
2 slot	25	2S + 37	L+47 W+10	L+52 W+15	W+37
	38				
	50				
	63				
	76				

### SJS-A NC correction for various diffuser lengths

Length (m)	0.6	1.2	2.4
Supply NC	-3	0	+3
Return NC	-3	0	+5

### SJS-A Throw correction multiplier for length

Length	0.6	1.2	2.4
Throw Correction	0.7	1.0	1.5

# SJS-A Jet Slot Ceiling Diffuser

## SJS-T Performance Data

Slot Width (mm)	No of slot								
25	1 Slot	CMH	139	223	307	390	474	558	641
		Tot. Press (mmAq)	0.4	1.1	2.0	3.2	4.8	6.6	8.7
		NC	-	18	25	31	36	40	43
		Throw (m)	2.4-7.0	5.8-8.8	7.3-10.1	8.2-11.6	8.8-12.8	9.8-13.7	10.4-14.6
	2 Slot	CMH	279	418	558	697	837	976	1115
		Tot. Press (mmAq)	0.5	1.2	2.0	3.2	4.6	6.2	8.2
		NC	-	20	27	32	37	40	43
		Throw (m)	2.4-7.3	5.5-9.1	7.3-10.4	8.2-11.6	9.1-12.8	9.8-13.7	10.4-14.9
38	1 Slot	CMH	167	251	335	418	502	586	669
		Tot. Press (mmAq)	0.3	0.7	1.2	1.9	2.8	3.8	4.9
		NC	-	-	20	26	30	34	37
		Throw (m)	1.5-6.4	3.7-7.9	6.4-9.1	7.3-10.4	7.9-11.3	8.5-12.2	9.1-12.8
	2 Slot	CMH	335	474	614	753	892	1032	1171
		Tot. Press (mmAq)	0.4	0.8	1.3	1.9	2.7	3.6	4.6
		NC	-	16	22	27	31	34	38
		Throw (m)	1.5-6.4	3.0-8.2	5.2-9.4	7.3-10.4	7.9-11.3	8.5-12.2	9.1-13.1
50	1 Slot	CMH	167	279	390	502	614	725	837
		Tot. Press (mmAq)	0.2	0.5	1.0	1.7	2.6	3.6	4.8
		NC	-	-	19	25	30	34	37
		Throw (m)	0.9-3.7	2.4-7.6	4.9-8.8	7.0-10.1	7.9-11.0	8.5-12.2	9.1-12.8
	2 Slot	CMH	335	530	725	920	1115	1311	1506
		Tot. Press (mmAq)	0.2	0.6	1.1	1.8	2.6	3.6	4.7
		NC	-	-	21	27	31	35	38
		Throw (m)	0.9-3.7	2.1-7.9	4.3-9.1	6.7-10.4	7.9-11.3	8.8-12.2	9.4-13.1
63	1 Slot	CMH	167	307	446	586	725	865	1004
		Tot. Press (mmAq)	0.1	0.5	0.9	1.6	2.5	3.5	4.7
		NC	-	-	18	25	30	34	37
		Throw (m)	0.6-2.4	1.8-7.3	4.3-8.5	7.0-10.1	7.9-11.0	8.5-12.2	9.1-13.1
	2 Slot	CMH	335	586	837	1088	1339	1590	1841
		Tot. Press (mmAq)	0.2	0.5	1.0	1.7	2.6	3.6	4.8
		NC	-	-	20	27	32	36	39
		Throw (m)	0.6-2.1	1.8-7.0	3.4-9.1	5.8-10.4	7.9-11.3	8.8-12.5	9.4-13.4
76	1 Slot	CMH	167	335	502	669	837	1004	1171
		Tot. Press (mmAq)	0.1	0.4	0.9	1.6	2.4	3.5	4.7
		NC	-	-	18	24	30	34	38
		Throw (m)	0.3-1.5	1.5-6.4	3.7-8.5	6.4-9.8	7.9-11.0	8.5-12.2	9.1-13.1
	2 Slot	CMH	335	669	1004	1339	1673	2008	2343
		Tot. Press (mmAq)	0.1	0.5	1.1	1.9	2.9	4.2	5.8
		NC	-	-	21	28	34	38	42
		Throw (m)	0.3-1.5	1.5-6.1	3.4-9.1	6.1-10.7	8.5-11.9	9.1-13.1	10.1-14.0

- Throw is based on terminal velocities of 0.5m/s – 0.25m/s respectively.
- NC value is based on a room absorption of 10 dB, re 10<sup>-12</sup> watts.
- Throw values based on entire section 1.2 meter long.

- Dash (-) in space indicates NC values less than 20.
- Performance data are obtain on isothermal condition.

## SJS-A Flat Type Oder Code

Model	Type	Accessories	No. of Slot	L
SJS-A	F	PB	2	300

Example : SJS-A + F + PB - 2 - 300